

Packaging Corporation of America

2007 Citi Basic Materials Symposium



December 4, 2007



Paul T. Stecko
Chairman and CEO

Packaging Corporation of America



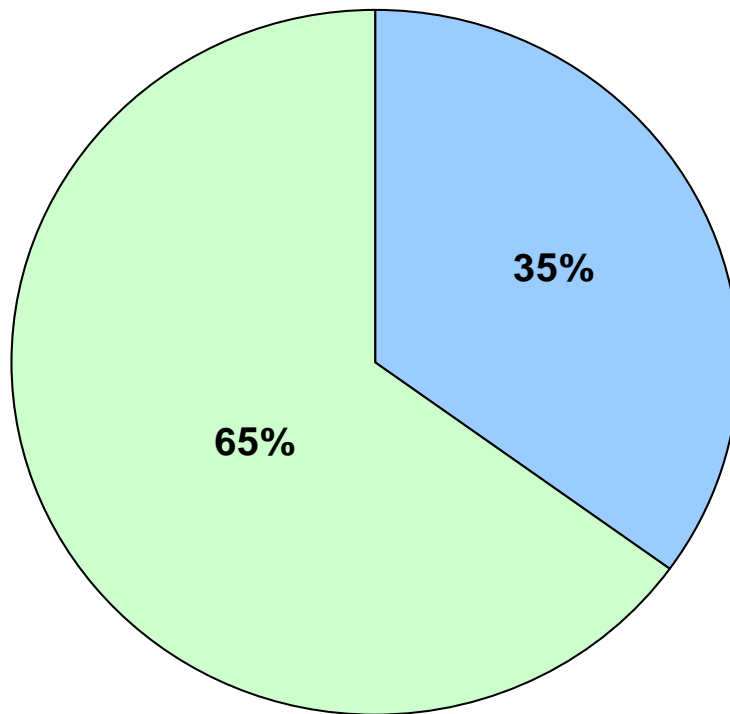
Certain statements in this presentation are forward-looking statements. Forward-looking statements include statements about our future financial condition, our industry and our business strategy. Statements that contain words such as “anticipate”, “believe”, “expect”, “intend”, “estimate”, “hope” or similar expressions, are forward-looking statements. These forward-looking statements are based on the current expectations of PCA.



Because forward-looking statements involve inherent risks and uncertainties, the plans, actions and actual results of PCA could differ materially. Among the factors that could cause plans, actions and results to differ materially from PCA’s current expectations are those identified under the caption “Risk Factors” in PCA’s Form 10K filed with the Securities and Exchange Commission and available at the SEC’s website at “www.sec.gov”.

“Have Established Their Place in Society”

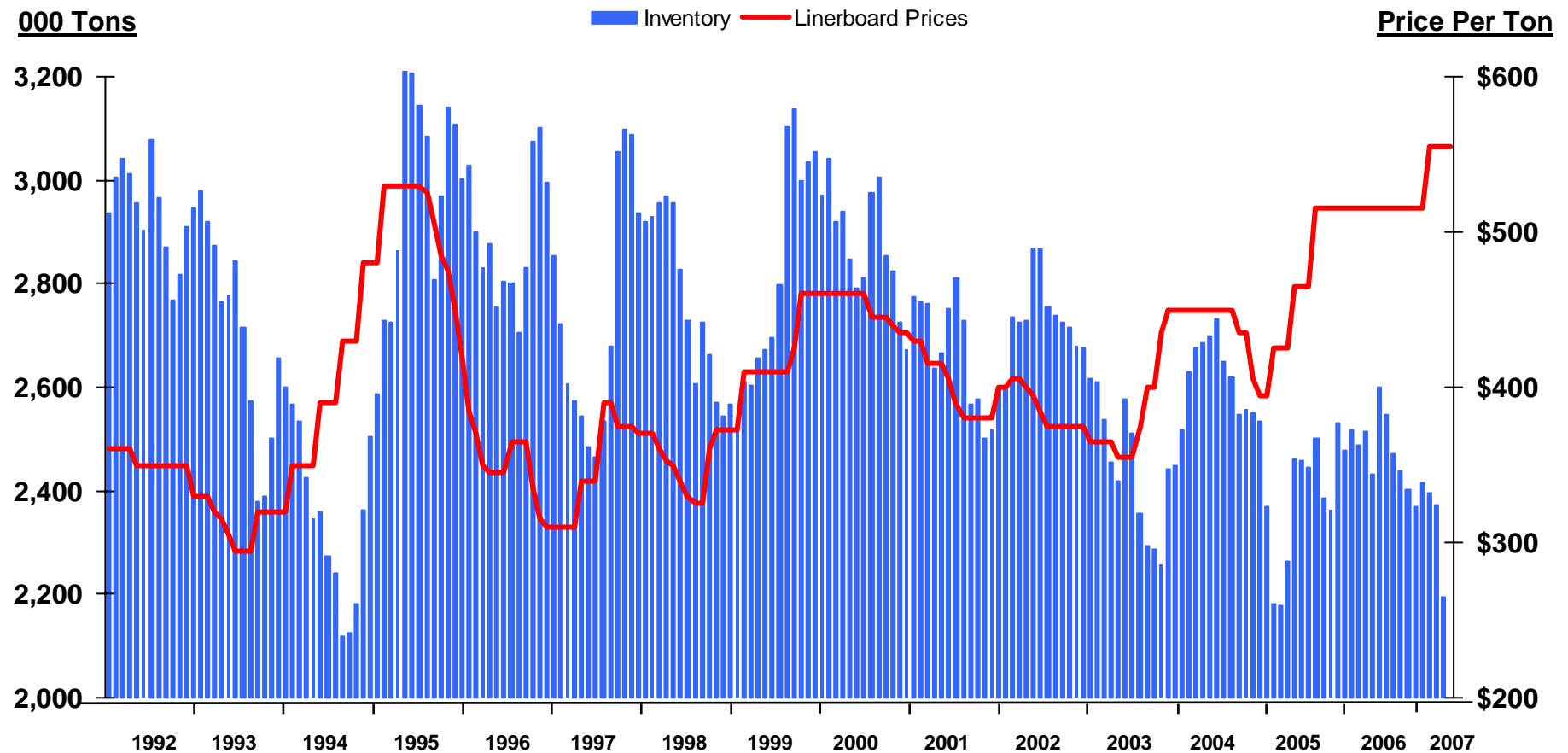
- **Functional**
- **Affordable**
- **Eco-Friendly**

65% of PCA Mill Fuel Consumption is from Renewable Sources



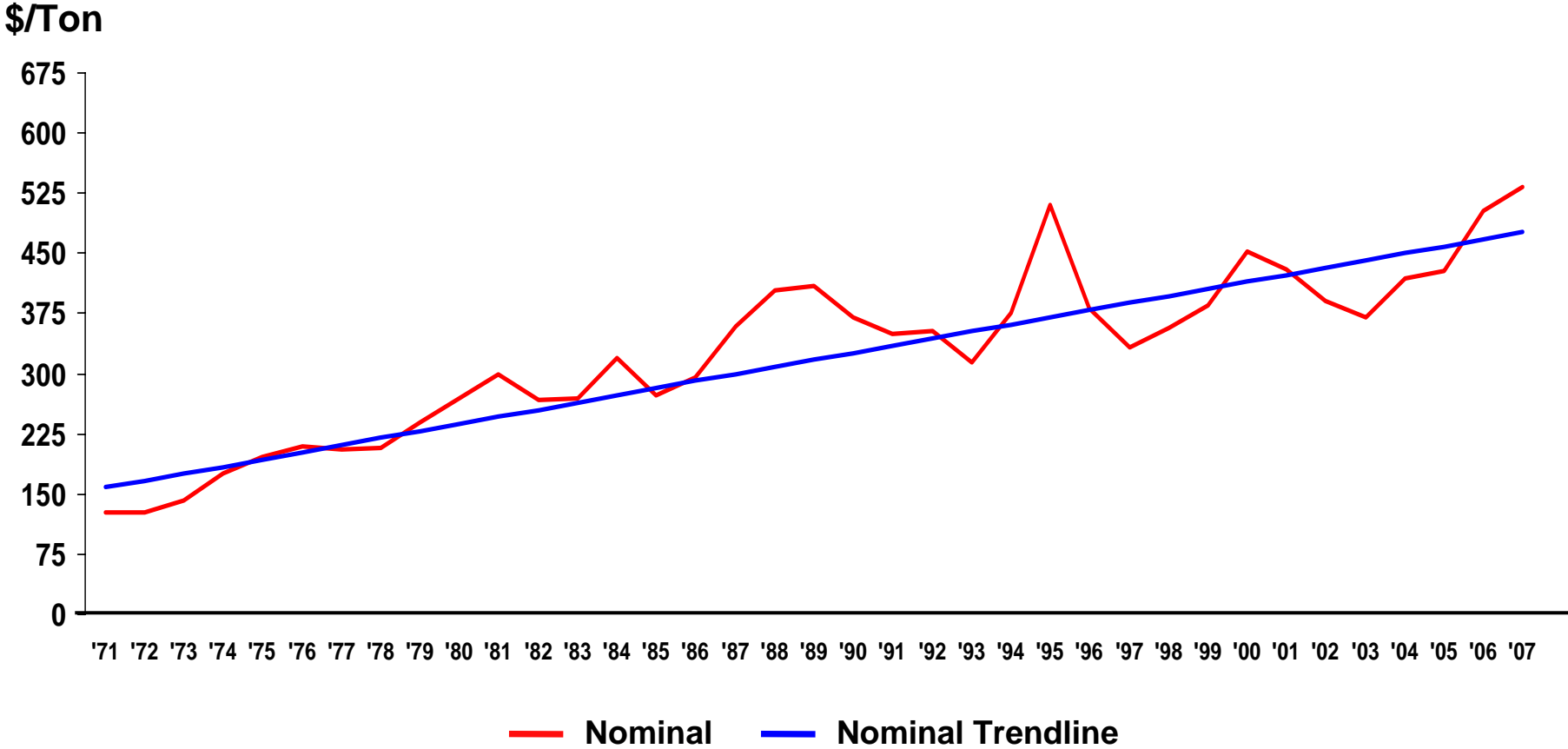
	Renewable	
	Purchased Bark	11%
	Internal Bark	15%
	Black Liquor	38%
	Biogas	1%
		<hr/>
		65%
	Fossil Fuels	
	Natural Gas	5%
	Coal	17%
	Fuel Oil	4%
	Purchased Electricity	8%
	Other	1%
		<hr/>
		35%

Industry Containerboard Inventory & Pricing



Sources: Industry Inventory, Fiber Box Association and American Forest & Paper Association; Linerboard Prices, Industry Publications

Linerboard Trendline Pricing

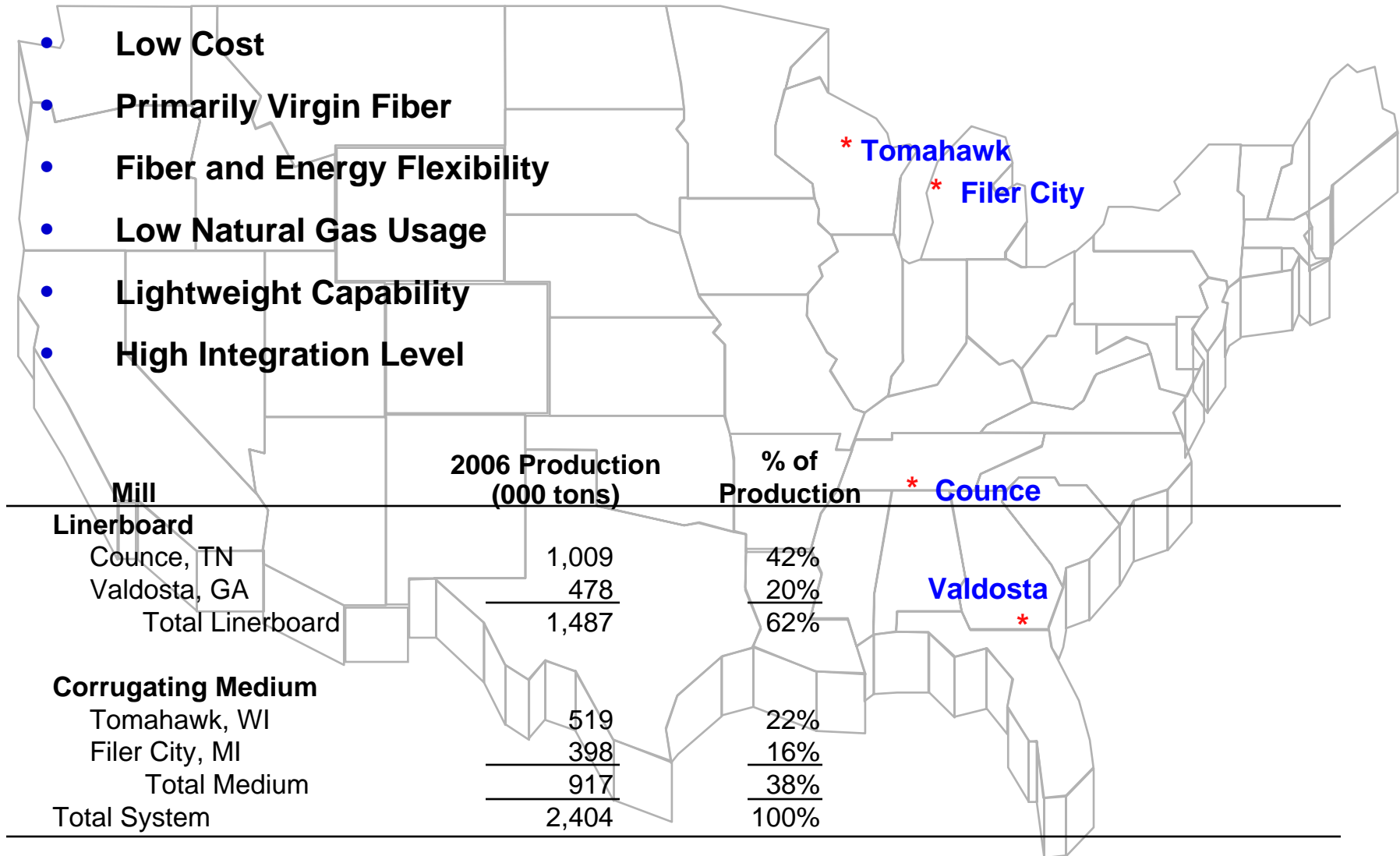


Source: RISI North America Pulp and Paper Review and PCA calculations of trendline.

Mill System



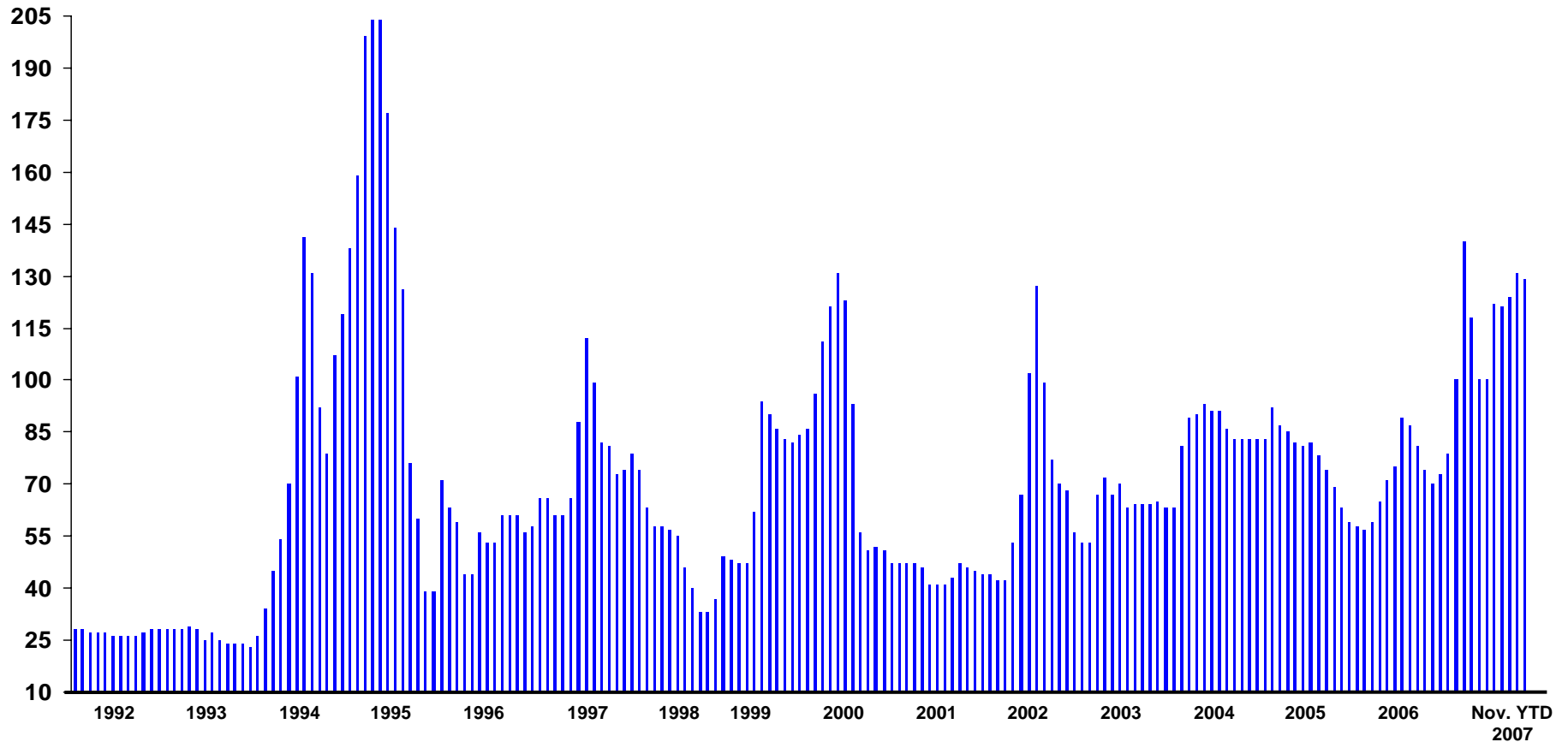
- Low Cost
- Primarily Virgin Fiber
- Fiber and Energy Flexibility
- Low Natural Gas Usage
- Lightweight Capability
- High Integration Level



Recycled Fiber Price 1992 to Present



\$/Ton⁽¹⁾



(1) Industry publications for OCC pricing per ton excluding delivery costs

China Becoming World's Largest Containerboard Market in Demand

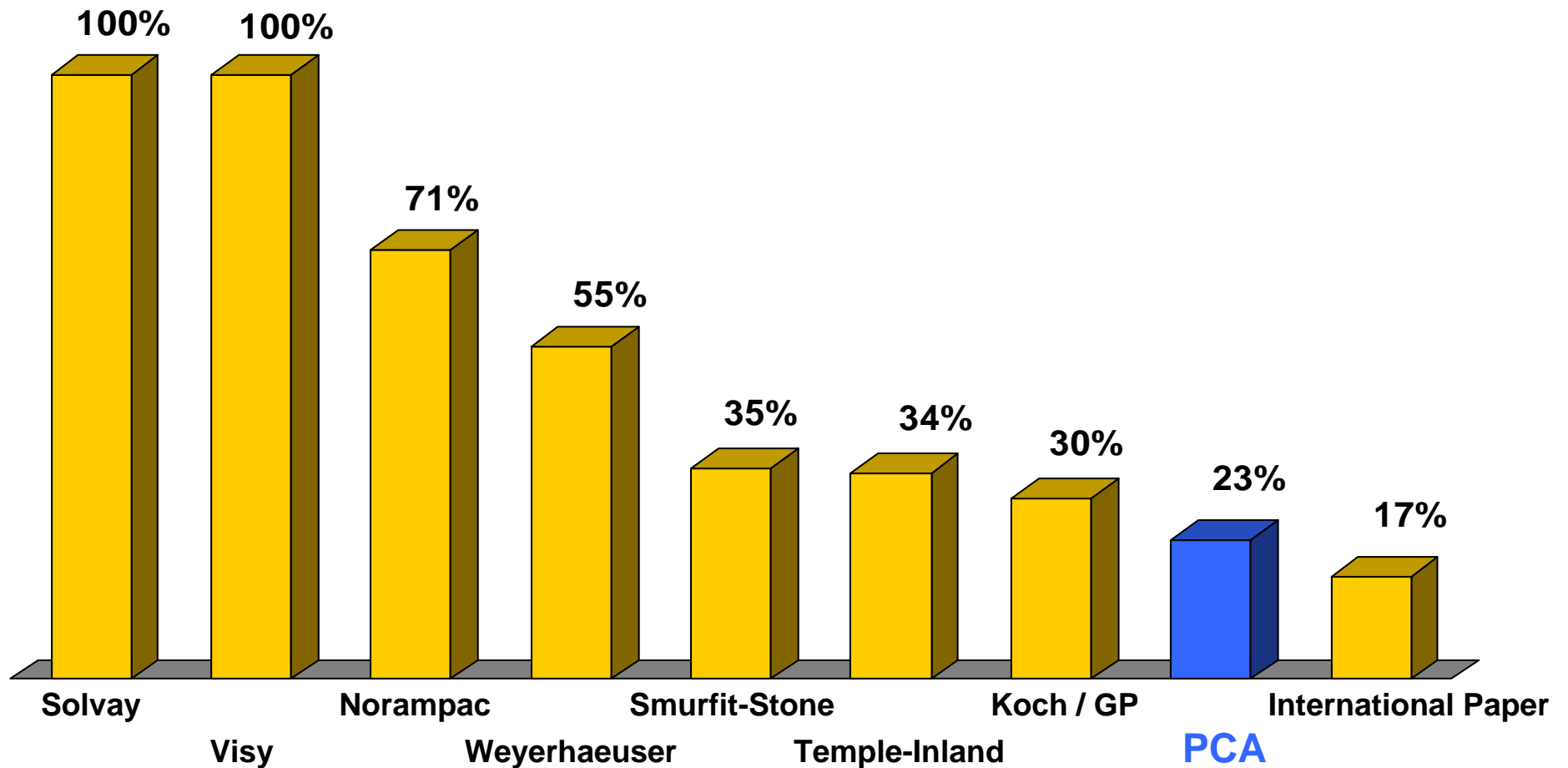


<i>(Million Tons)</i>	<u>2006</u>	<u>2009e</u>	<u>Growth (tons)</u> <u>2009/2006</u>	<u>Growth (%)</u> <u>2009/2006</u>
North America	31.2	31.9	0.7	0.7%
Western Europe	21.9	23.5	1.6	2.5%
China	23.8	32.9	9.1	11.4%
Rest of Asia	23.5	26.5	3.0	4.1%
Latin America	9.3	10.7	1.4	4.9%
Rest of World	12.3	14.8	2.5	6.5%
World Total:	122.0	140.3	18.3	4.8%

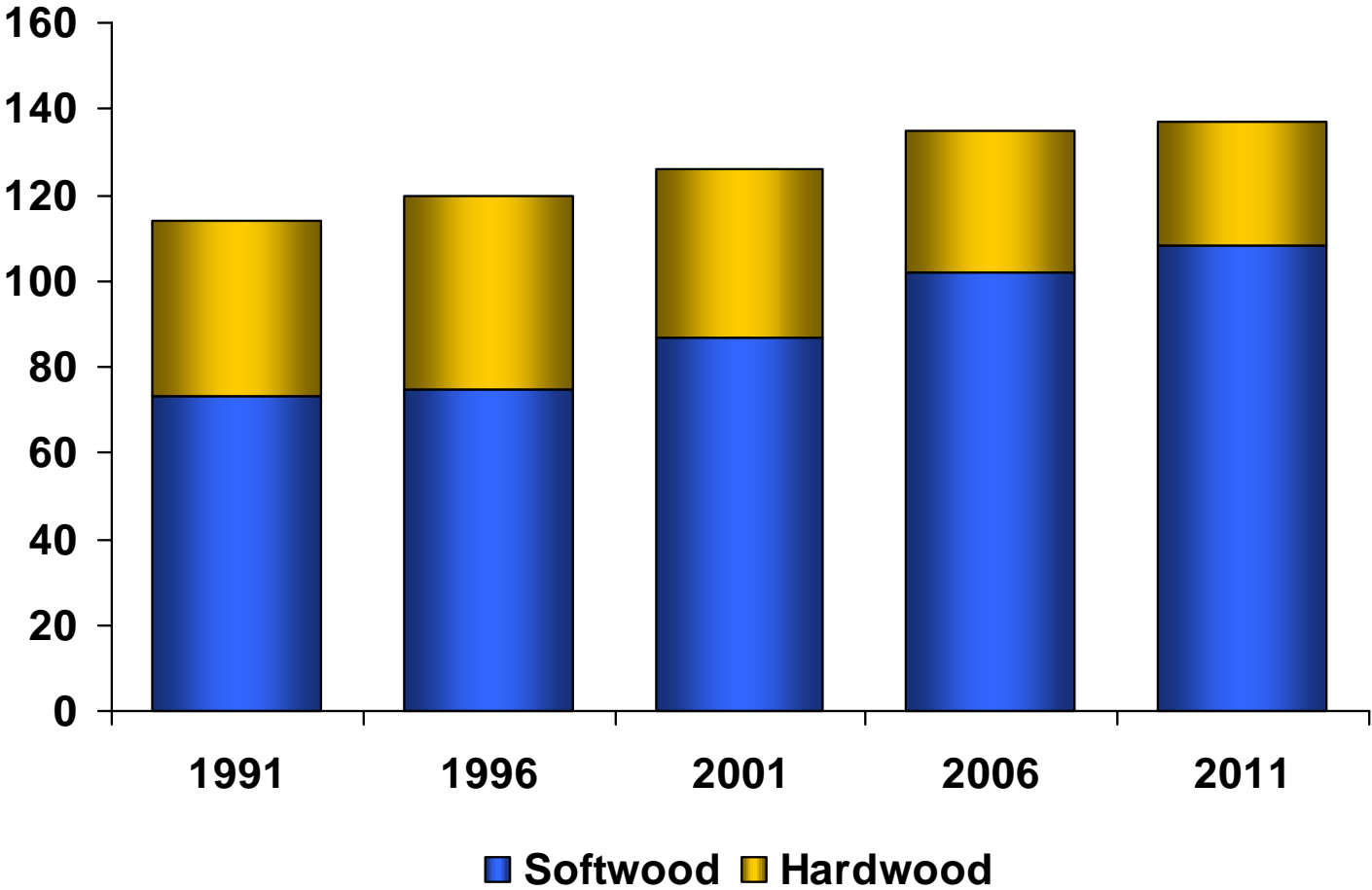
Limited Exposure to Increases In Wastepaper Prices



Wastepaper Utilization



US South Potential Pulpwood Supply (Million Short Tons)

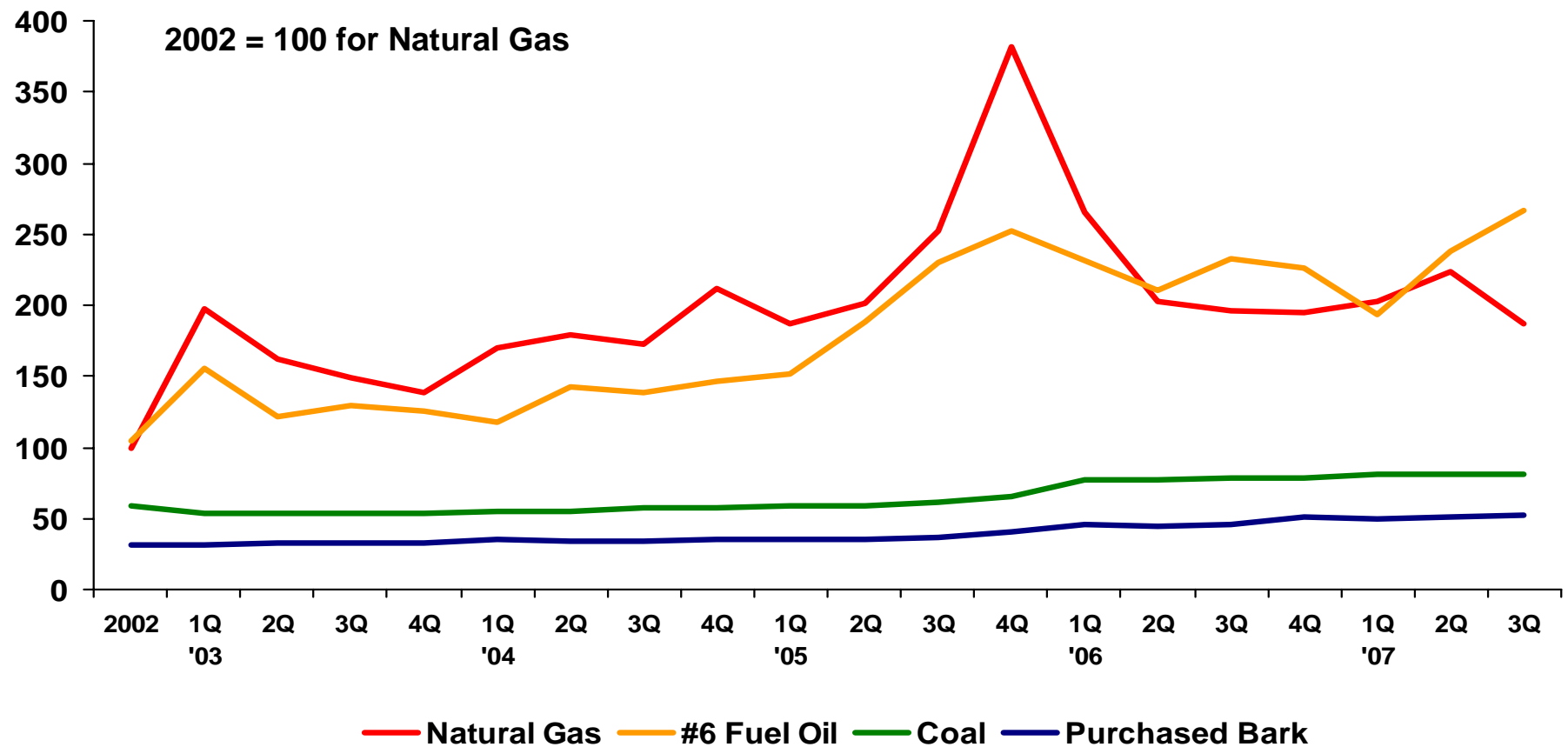


Source: RISI

Indexed Pricing History per M²BTU for Purchased Fuels



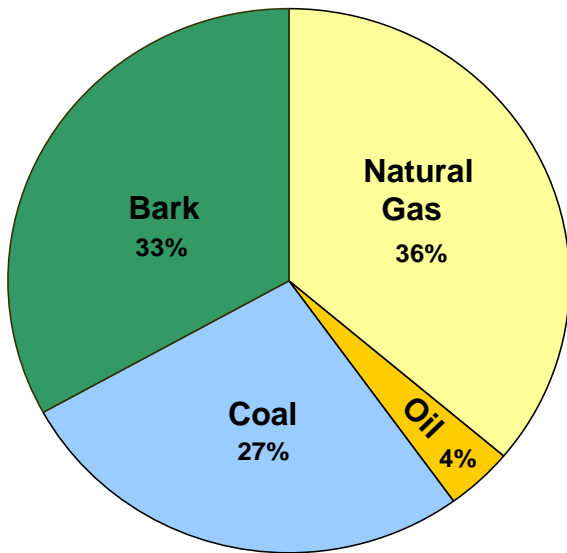
Index



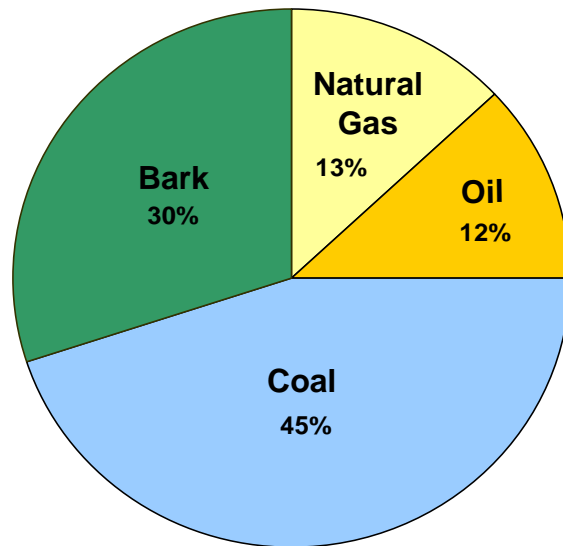
Mill Purchased Fuel Mix



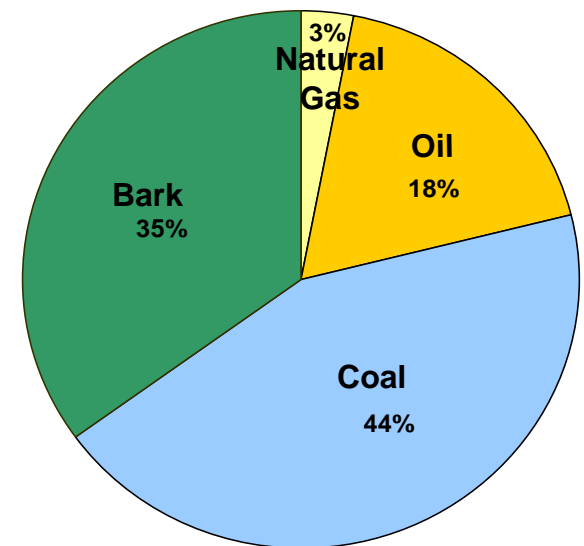
2000



2006



Minimum Gas Usage
(4Q '05)



Corrugated Products

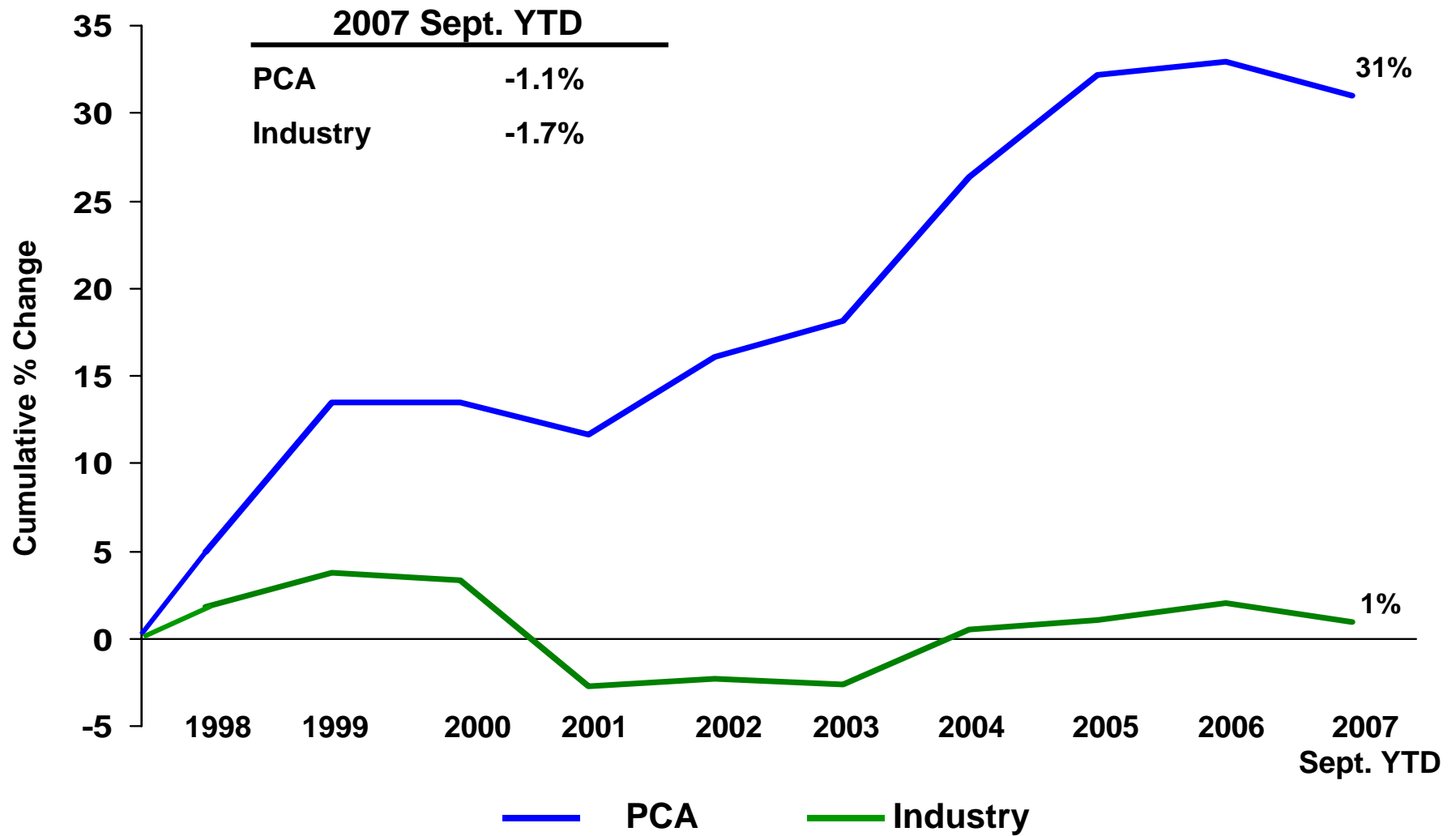


Differentiated Operating Strategy



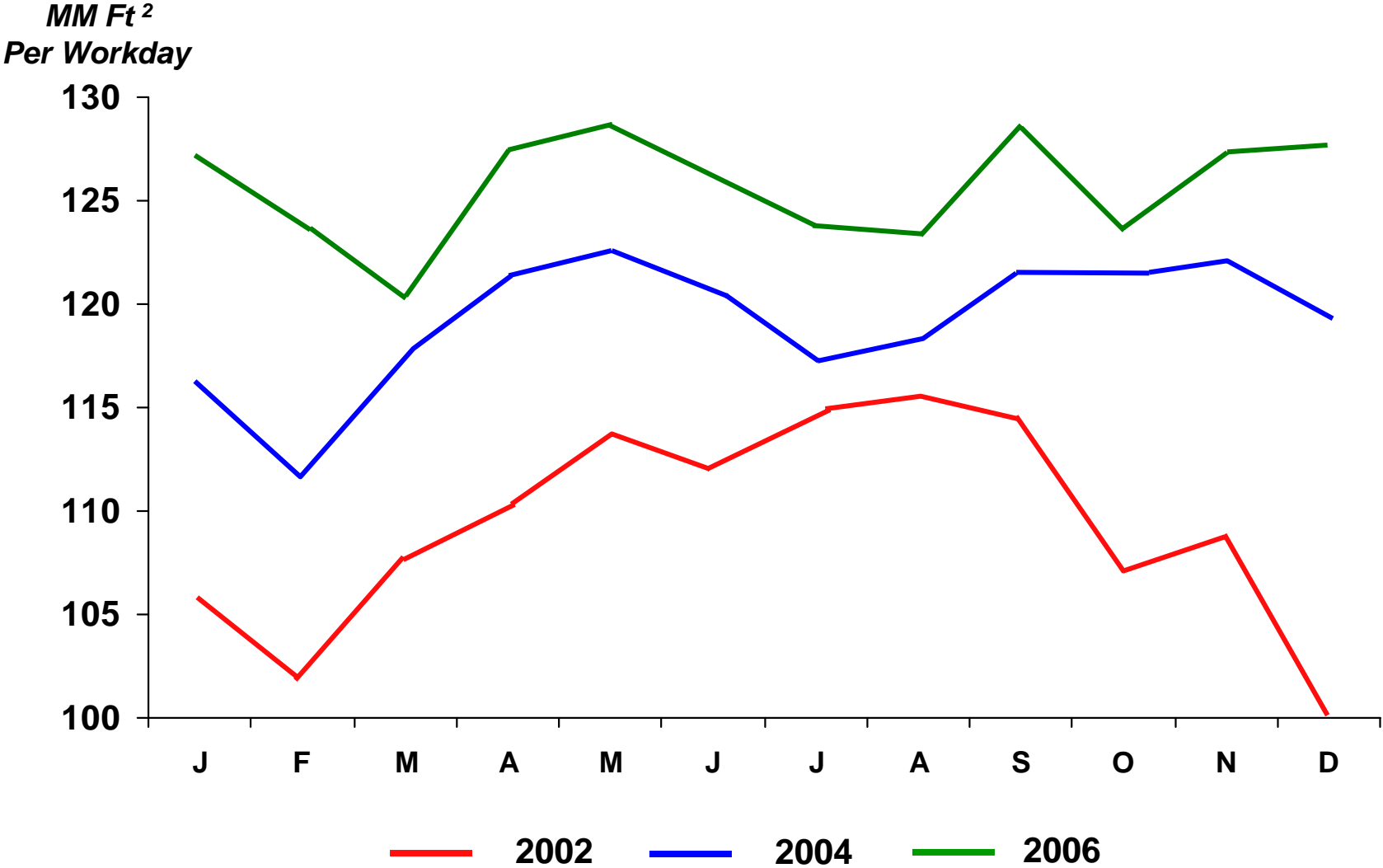
- Stand-alone profit centers
- Value-added products
- 70% local accounts
- Over 9,100 customers
- Top 30 accounts represent only about 30% of sales

Corrugated Products Growth (1)

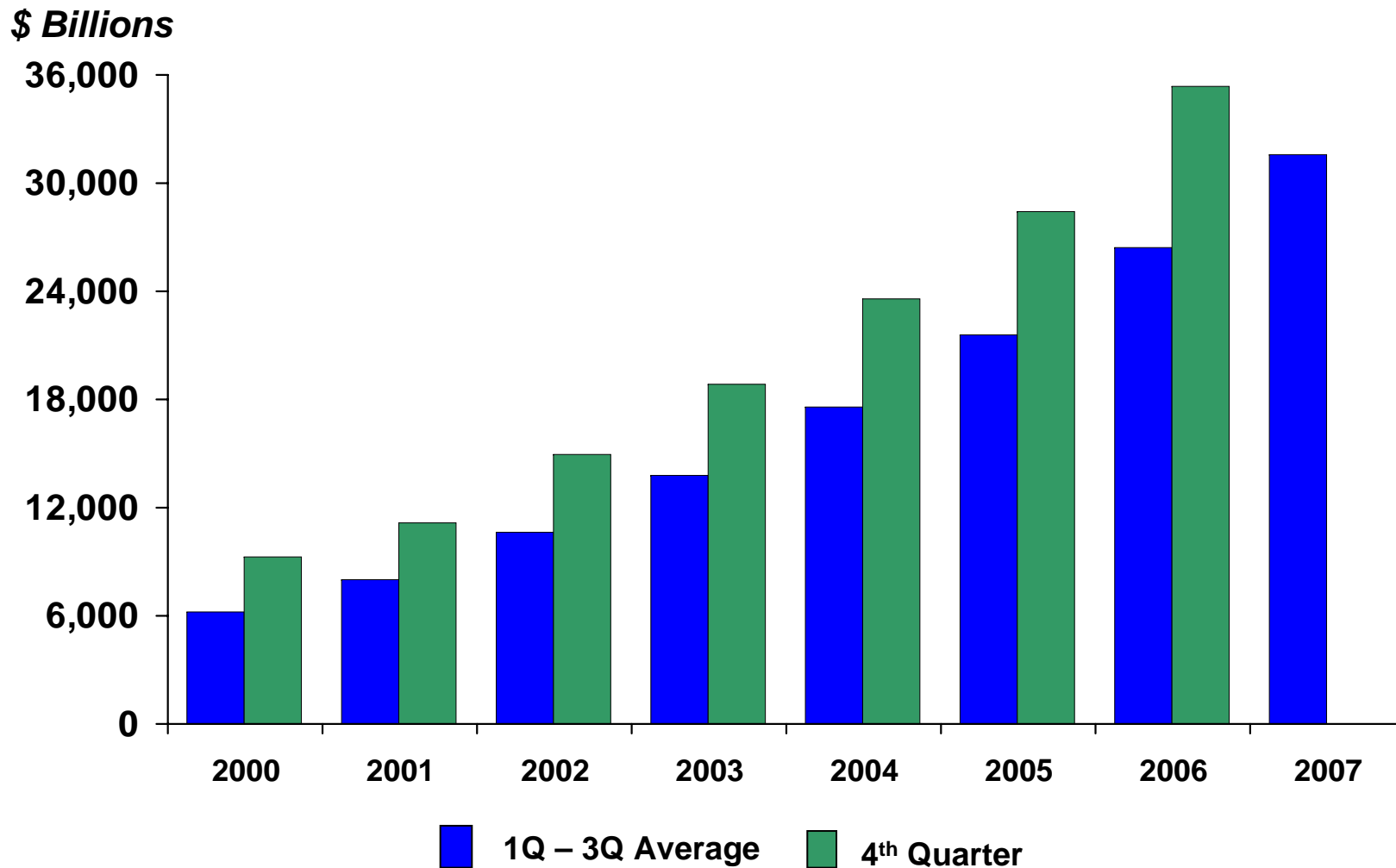


(1) Shipments per workday / FBA Data for Industry, and PCA actuals

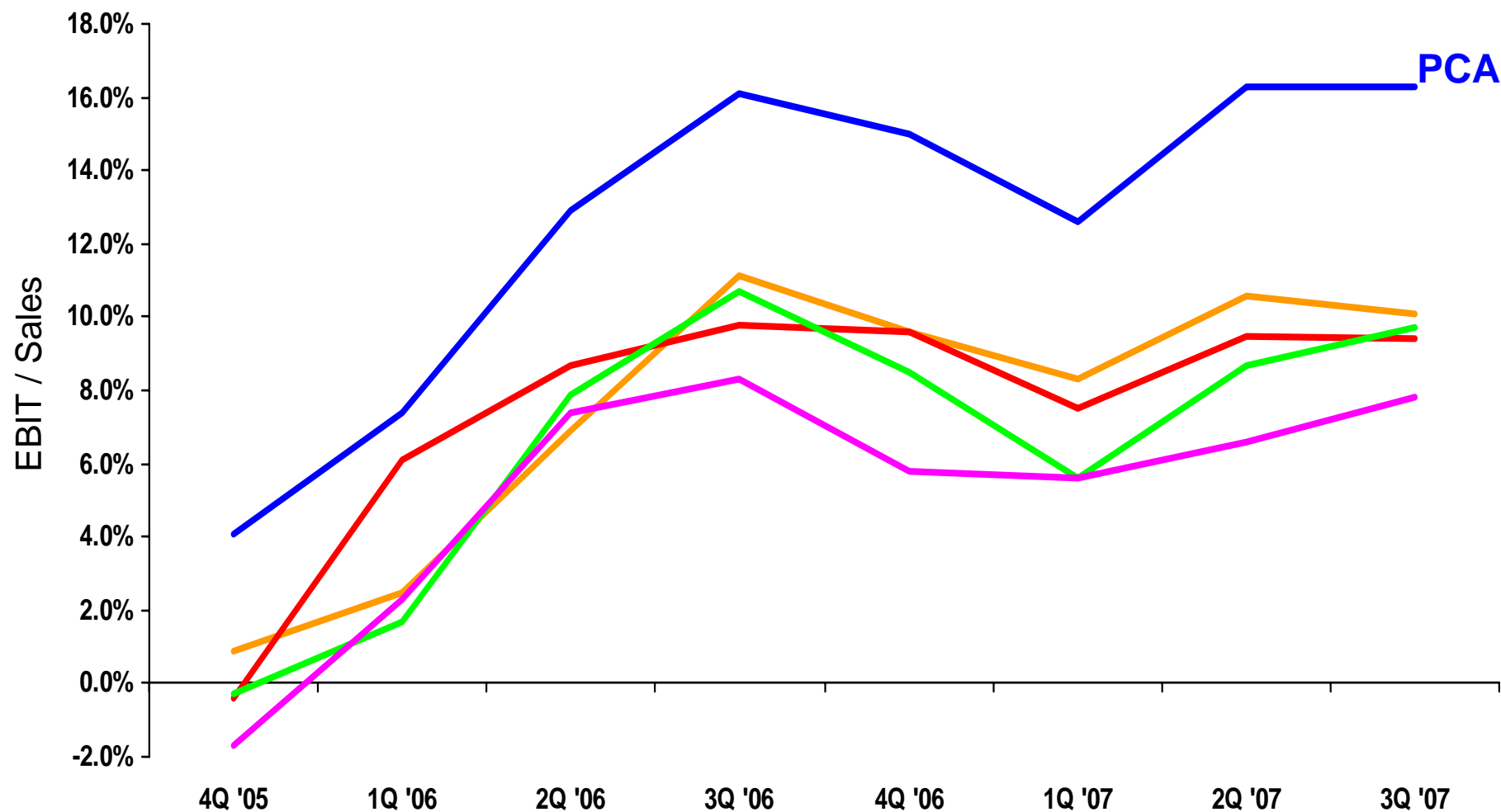
PCA Box Shipments 2006, 2004, and 2002



E-Commerce Retail Sales



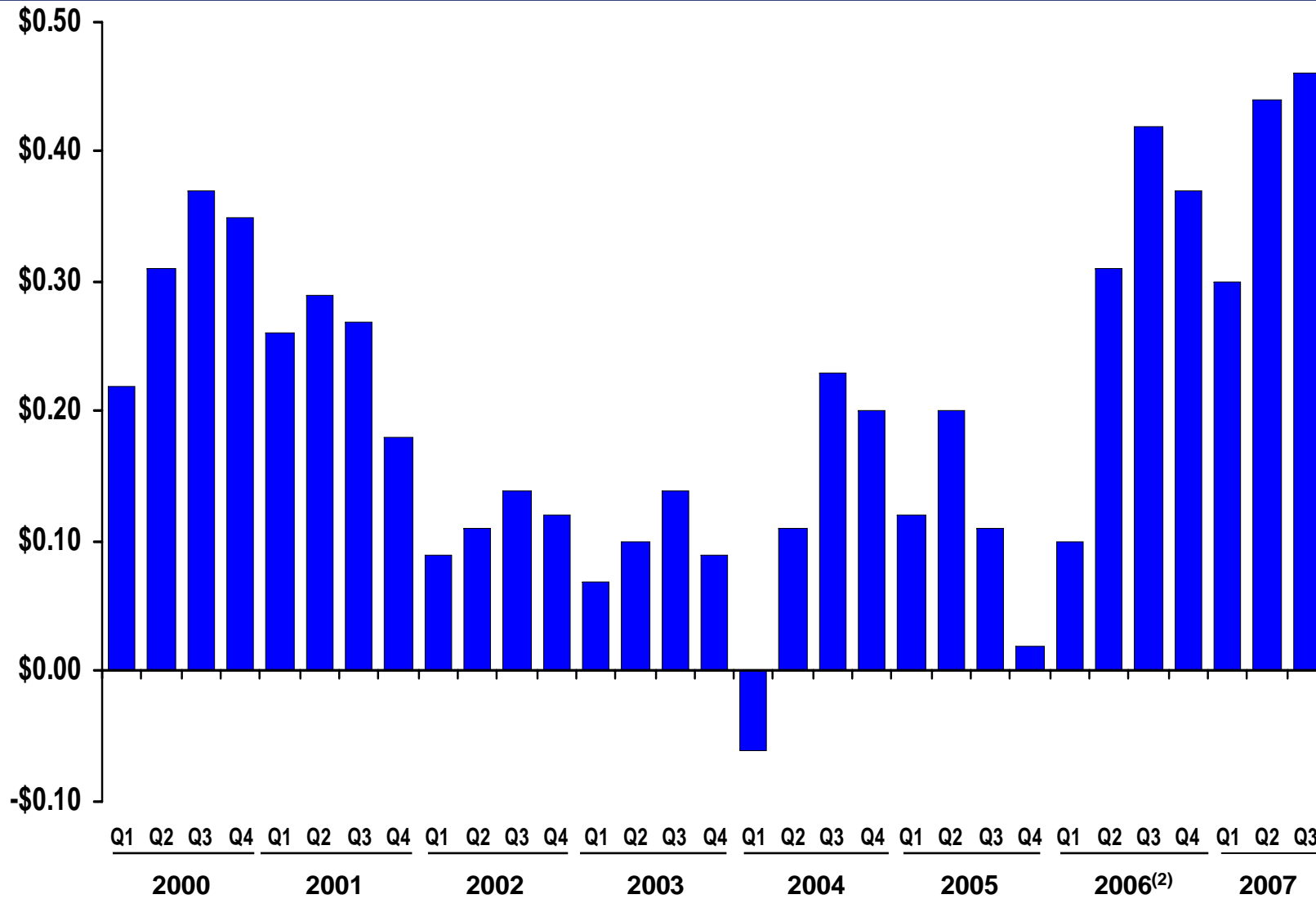
Containerboard Segment EBIT Margins PCA vs. Four Largest Publicly Traded Competitors



(1) Reported segment sales and earnings before interest expense and taxes from company quarterly earnings press releases and SEC filings, adjusted for company disclosed special items. For comparability to other company's reported segment sales and earnings, PCA results exclude corporate overhead and wood products sales and income.



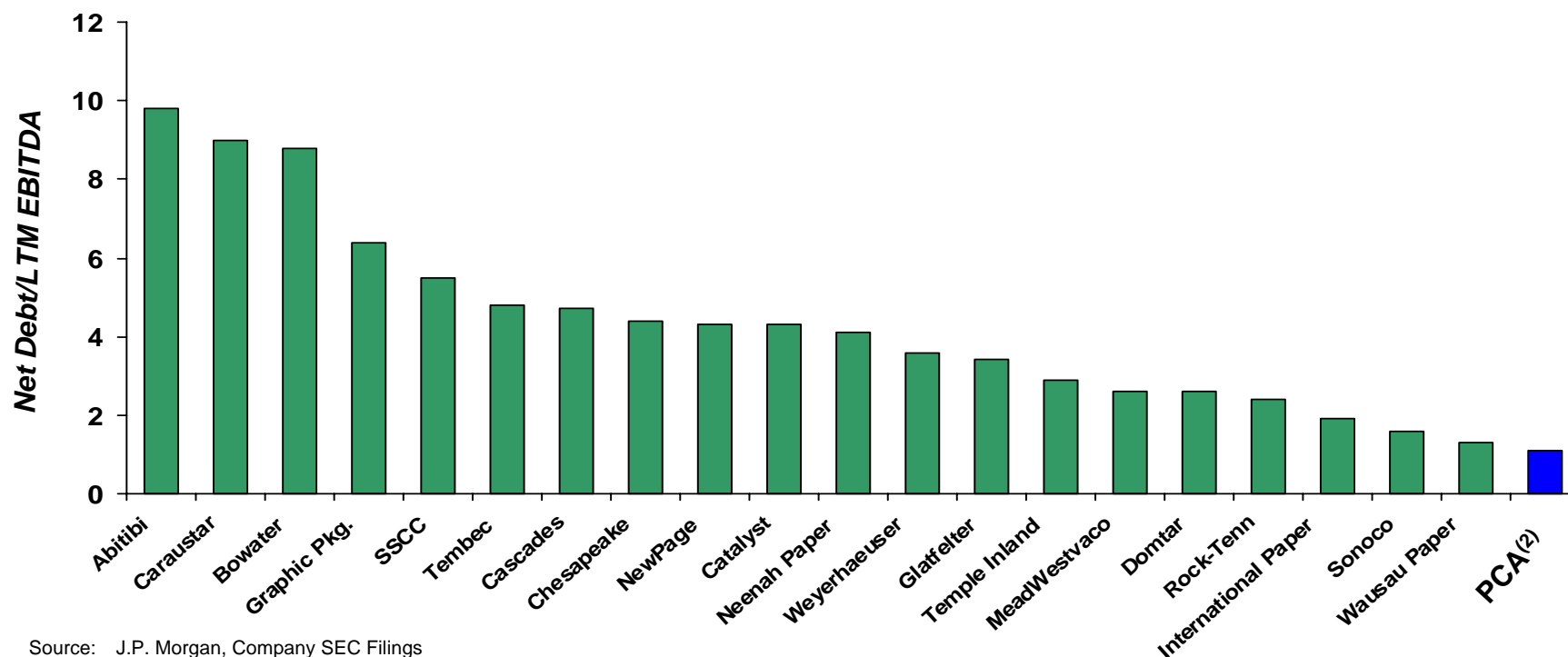
Earnings Per Share History ⁽¹⁾



(1) See appendix to presentation for reconciliation of reported EPS to EPS shown above.

(2) EPS for 2006 has been restated for the adoption of FSP No. AUG AIR-1, "Accounting for Planned Major Maintenance Activities".

Paper Industry Leverage⁽¹⁾ (Public Companies)



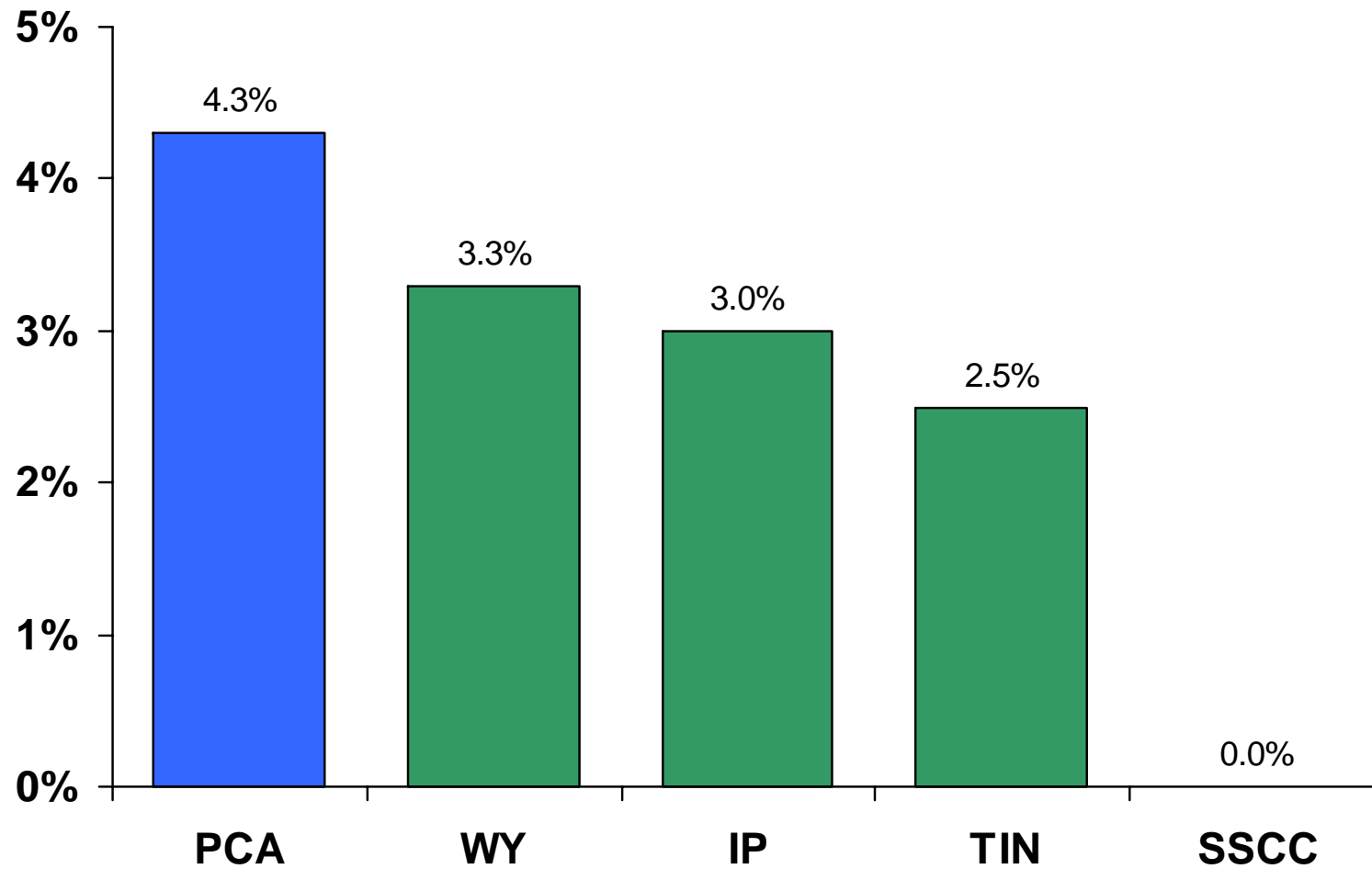
Source: J.P. Morgan, Company SEC Filings

(1) Net Debt / LTM EBITDA is a ratio commonly used by the ratings agencies. Net debt is calculated as total debt less cash. LTM EBITDA is calculated for the 12 month period ended June 30, 2007 and excludes unusual or non-recurring items.

(2) PCA's Net Debt as of June 30, 2007 and LTM EBITDA for the 12-month period ended June 30, 2007 calculated as follows:

Short-term debt and current maturities of long-term debt	\$ 119.2	Income before interest and taxes, as reported for the period	\$ 282.6
Long-term debt	567.9	Add: Depreciation, depletion and amortization as reported for the period	152.0
	<hr/>		<hr/>
Total debt at June 30, 2007	687.1	LTM EBITDA	\$ 434.6
Less: Cash and cash equivalents	(208.1)		<hr/> <hr/>
	<hr/>		
Net Debt at June 30, 2007	\$ 479.0		
	<hr/> <hr/>		
PCA's Net Debt / LTM EBITDA	1.1 x		

Dividend Yield (1)



(1) Based on share prices as of November 28, 2007 and announced annual dividend rates

MDP Stock Ownership and PCA Share Price



MDP Shares Owned
(Millions)

PCA Stock
Price



— MDP Stock Ownership — PCA Stock Price

- **Single Business Focus - Operational Excellence**
- **Grow Corrugated Products Volume**
 - Internal Growth
 - Acquisitions
- **Enhance Shareholder Value Through Financial and Strategic Flexibility**

Appendix to EPS History Slide

Reconciliation of Reported EPS to Recurring EPS



The following table reconciles reported EPS to recurring EPS for selected quarters:

	<u>1Q '00</u>	<u>4Q '00</u>	<u>3Q '03</u>	<u>4Q '03</u>	<u>4Q '04</u>	<u>2Q '05</u>	<u>3Q '05</u>
EPS as reported	\$ 0.06	\$ 0.58	\$ (0.31)	\$ -	\$ 0.36	\$ 0.26	\$ 0.10
Redemption charge for senior preferred stock	0.16						
Gain on sale of timberlands		(0.33)					
Early extinguishment of debt charge		0.10					
Debt refinancing charges			0.44				
Pactiv benefits payment				0.09			
STV dividends					(0.16)	(0.06)	
Plant closure							0.01
Recurring EPS	<u>\$ 0.22</u>	<u>\$ 0.35</u>	<u>\$ 0.13</u>	<u>\$ 0.09</u>	<u>\$ 0.20</u>	<u>\$ 0.20</u>	<u>\$ 0.11</u>

PCA

The logo consists of the letters 'PCA' in a bold, dark blue, sans-serif font. The letter 'A' is stylized with several parallel white diagonal lines extending from its top-right corner towards the right, creating a sense of motion or speed.